

I.C.T Electric Fixture Cleaning Machine I.C.T-5200



Introduction:

I.C.T-5200 Fixture Cleaning Machine is used to clean grease, flux, dusts on the surface of all kinds of SMT fixtures, tray, reflow oven cooler and filter, wave-soldering oven claw, chains, and nets...etc.

I.C.T-5200 is made up of wash unit, rinse unit, dry unit, rotation cleaning basket unit and control unit. Put the dirt SMT fixtures on to the cleaning basket, setting the cleaning parameters, the machine will automatically complete wash, rinse and dry process by just pushing start key. The fixtures after cleaning is very clean and dry, ready to use at any time.

Features:

- 1.Total SUS 304 structure, resist Acid and Alkali corrosion, firm and attractive.
- 2.1 meter diameter big cleaning round basket, can clean 20~40 pcs fixtures at one time.
- 3.Clean liquid spray from 3 spray rods on upper/lower and front side, cleaning basket rotates during cleaning.
- 4.Clean liquid pressure up to 6kg/cm2, make it thoroughly clean of whole fixture.
- 5.PLC program control, Touch-panel operation, cleaning parameters can be set and change conveniently.
- 6.Easy One-button operation, high pressure clean+ rinse+ hot air dry, all process complete in a cycle automatically.
- 7.Clean liquid and water heat and temperature keeping function.
- 8.Closed-loop clean and rinse, clean detergent and rinse water are cycling filtered and reused in the machine.
- 9.Standard equipped solution and water auto fill in and discharge function.
- 10.The fixtures are clean and dry after cleaning, standby and ready for use at any time.

Material:



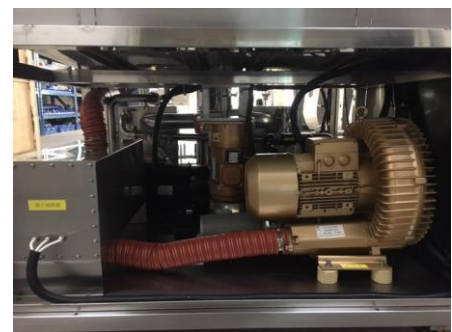
Control Box

Mitsubishi, Schneider, CKD, Omron



Cleaning Basket

Auto(Cleaning, Rinsing, Drying)

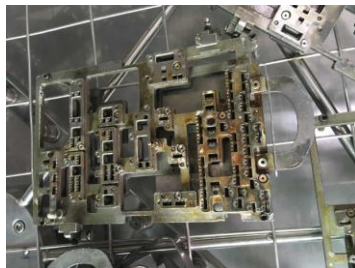


Pump

High pressure, high flow, electric



Effect:



vs



Before cleaning

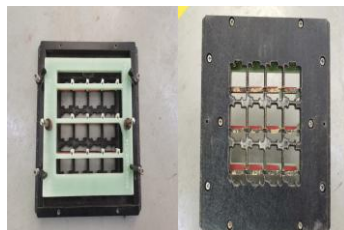
After cleaning

Cleaning Report:

1.Customer:TAMURA CORP.



2.Cleaning sample and Inspection Tool: Fixture ,CTC-300 Cleaning liquid,phone



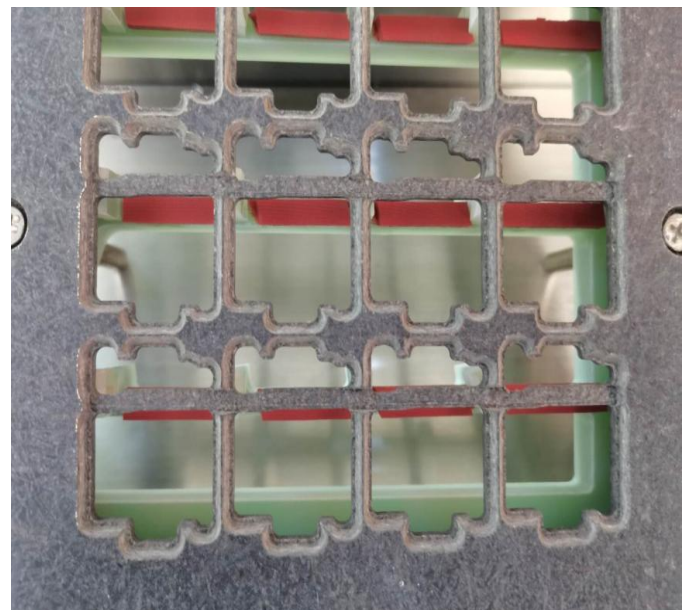
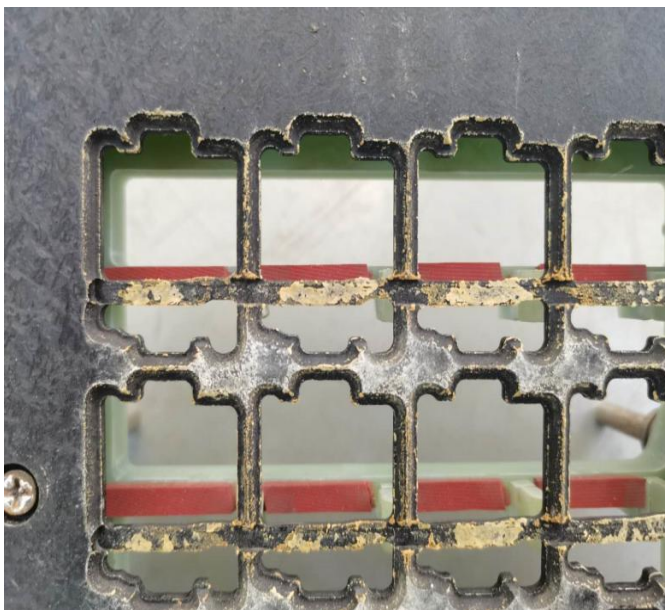
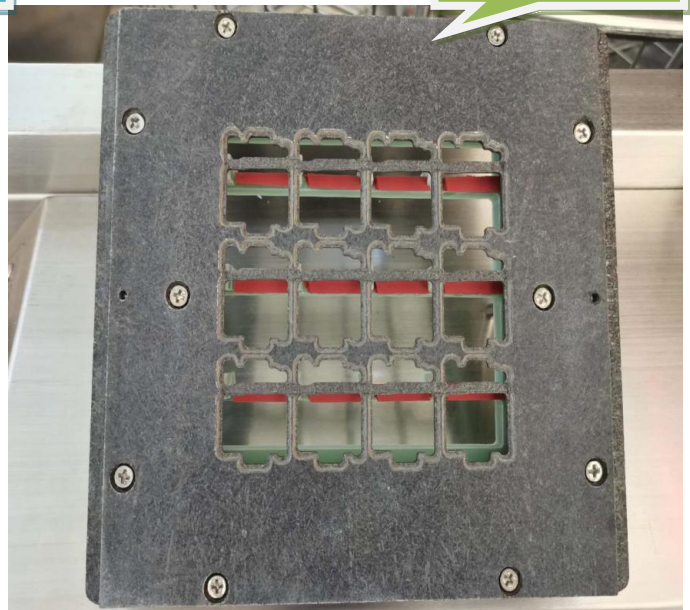
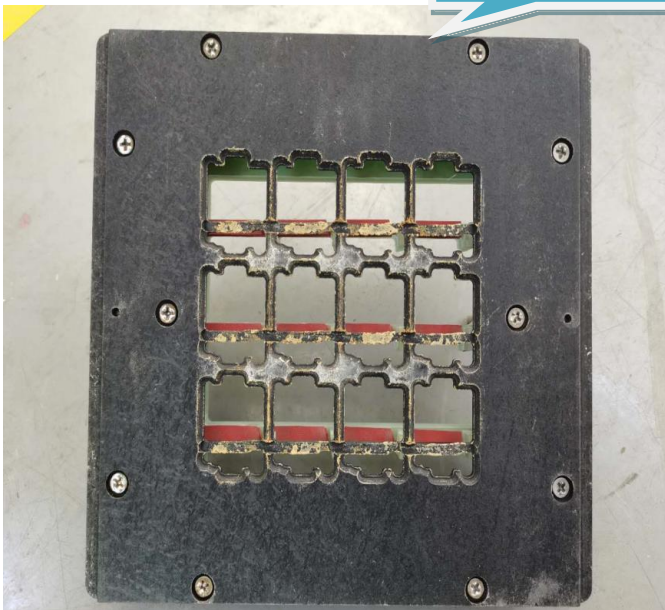
3. Condition setting:

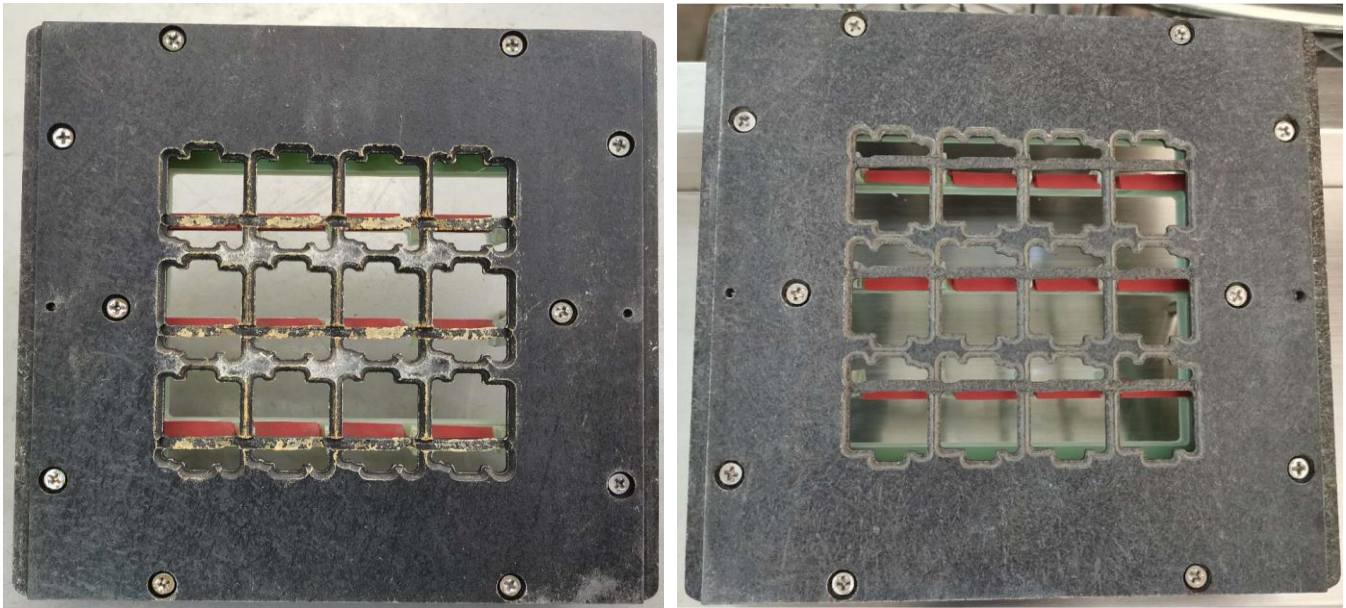
Machine	I.C.T-5200
Cleaning liquid	CTC-300
Clean time	600s
Rinse times	120s
Dry time	600s
Cleaning fluid temperature	45°C
Rinse water temperature	30°C
Dry temperature	80°C

4. Effect comparison:

Before cleaning

After cleaning





5. Conclusion

1. Wave soldering fixture is equipped with CTC-300 water-based environmental protection cleaning solution on I.C.T-5200 electric fixture cleaning machine. The cleaning time is 600s, the rinsing time is 120s, and the drying time is 600s. It can be cleaned and dried, and can be used after taking it out.
2. Regular machine cleaning, no damage to the fixture, wave soldering to determine the residual rosin on the fixture, improve the quality and product yield.
3. The water-based cleaning fluid has no volatilization and can be recycled to save the cleaning cost; it has no flash point, which is safe and environmentally friendly, and meets the requirements of fire protection and environmental protection.

Specification:

Item	I.C.T-5200
Cleaning basket size	Φ1000mm x H 200mm. Special size option
Spray unit	Upper/lower/front side, 720° all-around spray
3-level filter system	1mm / 50um / 20um filters
Clean tank capacity	80L
Rinse tank capacity	80L
Clean spray pressure	5~6 kg/cm ²
Clean time	5~15 Min
Rinse time	1~3 Min
Dry time	10~20Min
Clean detergent heat temp	Room temp~80°C
Rinse water heat temp	Room temp~80°C
Hot air heat temp	Room temp~90°C
Clean pump power	2.2KW
Clean detergent power	9KW
Hot air heat power	9KW
Air blower power	4.0KW

Air supply	0.5~0.7Mpa
Power supply	3 P,AC 380V,50/60HZ,33KW
Machine size	L1380 x W2100 x H 1400 (mm)
Machine weight	500KG

Customer:

Thanks for choosing I.C.T.
I.C.T looks forward to win-win cooperation.
Thank you.